

MBE 250
MBE 200
MBE 161-5

Portable X-ray tube inserts

- Air or water-cooled
- Compact and rugged
- Long lifetime proven in the field





MBE 200/250

The MBE family of portable inserts are based on advanced metal-ceramic technology and an anode-grounded mono-polar configuration. The design is particularly suitable for rugged outdoor conditions and gives high voltage stability, high power output and exceptional focal spot stability in a small compact design. Due to the anode grounding, water or air cooling are possible.

The inserts are intended for incorporation into OEM generators using SF₆ gas insulation but are equally well suited for mono-block designs.

All these products are designed, developed and manufactured at our own ISO 9001: V 2000 and ISO 14001 certified production facility.

Tube reference	MBE 161-5		MBE 200	MBE 250		
Nominal voltage	160		200	225	kV	max
Focal spot size (1)	0.5	1.5	1.5	1.5	mm	
Power	640	1 000	900	900	W	max.
Filament current	4.3	3.8	3.8	3.8	A	max.
Filament voltage (2)	2.4	5.3	4.6	4.6	V	typ.
Inherent filtration	1		1	1	mm Be	
Target material	Tungsten		Tungsten	Tungsten		
Anode angle	21		21	21	°	
Radiation coverage	45 x 55 (3)		40 x 40	40 x 4	°	
Weight	1.8		2.3	2.6	kg	

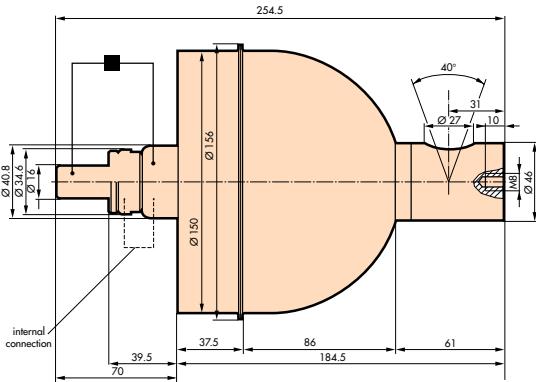
(1) GOST (Russia)

(2) At If max. The filament voltage at maximum filament current will vary from tube to tube.

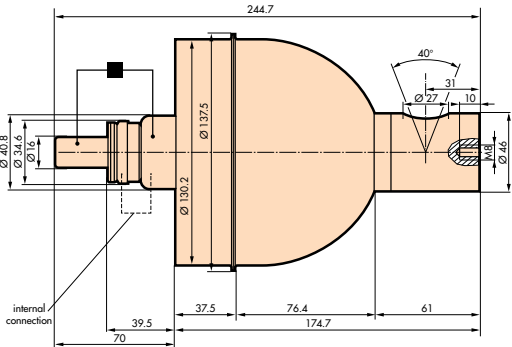
The precise value for each tube is supplied on the tube labeling

(3) For small focal spot

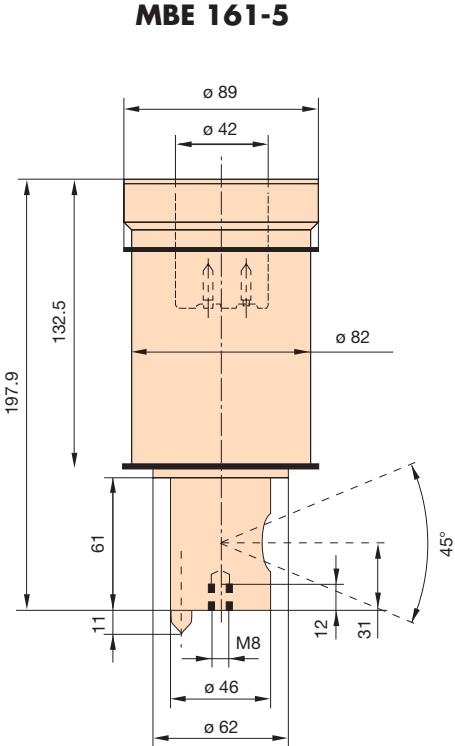
Outline drawings - dimensions in mm



MBE 250

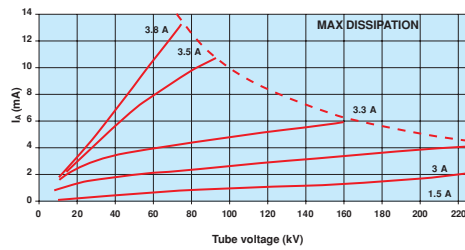


MBE 200

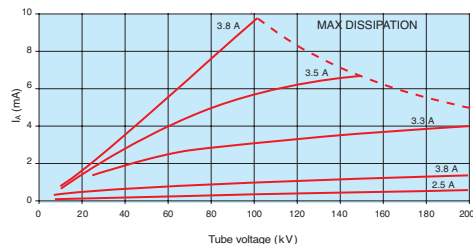


MBE 161-5

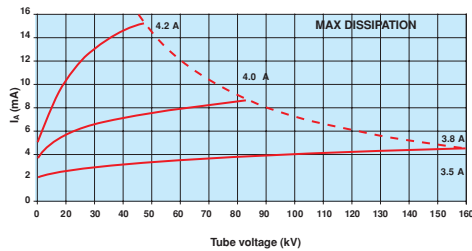
MBE 250: Characteristics curves



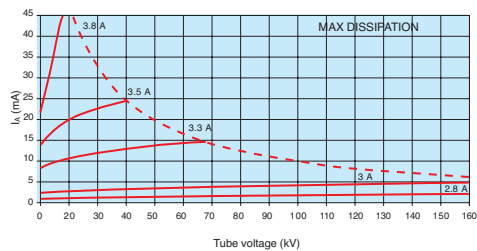
MBE 200: Characteristics curves



MBE 161-5: Small filament characteristics



MBE 161-5: Large filament characteristics



This document cannot be considered to be a contractual specification. The information given herein may be modified without notice due to product improvement or further development. Consult Thales Electron Devices before making use of this information for equipment design.

For further information, please contact:

THALES ELECTRON DEVICES

2 bis, rue Latécoère - 78941 Vélizy Cedex - France
Tel: + 33 1 30 70 35 00 - Fax: + 33 1 30 70 35 35
www.thalesgroup.com/electrondevices